



ORDER FLOW TRADER & PSYCH: MT4

INSTALLATION GUIDE

1. Select the 'LFMasterCourse_MT4_Setup' folder from the Downloads section of your computer.

Name	Type	Compressed size	Password ...	Size	Ratio	Date modified
LFMasterCourse_MT4_Setup	Compressed (zipped) Fol...	508 KB	No	508 KB	0%	22/07/2015 14:51
LFMasterCourse_MT7	Compressed (zipped) Fol...	1,416 KB	No	1,416 KB	0%	22/07/2015 14:51

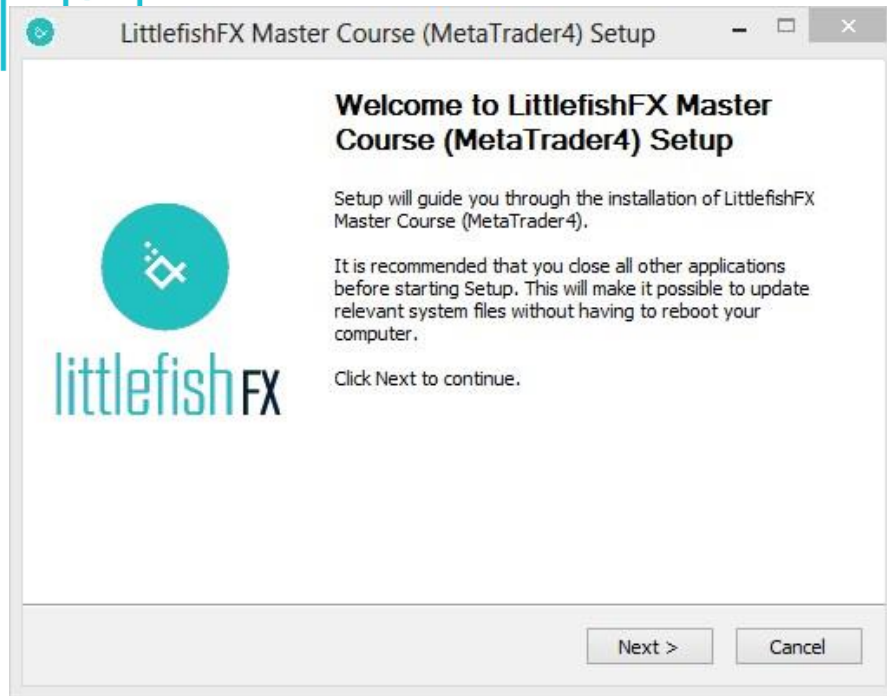
2. Then select the 'LFMasterCourse_MT4_Setup' application.

Name	Type	Compressed size	Password ...	Size	Ratio	Date modified
LFMasterCourse_MT4_Setup	Application	508 KB	No	533 KB	5%	20/06/2015 13:42

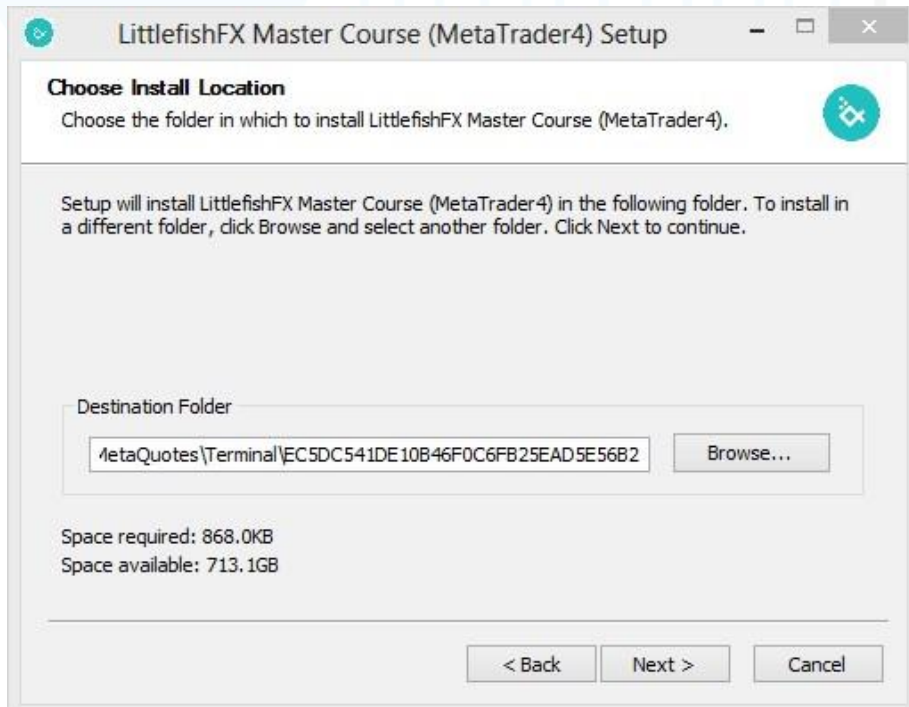
3. A window will then pop up asking if you wish to allow the application to run. Select 'Yes'.
4. The window shown below will then pop up to begin the installation. Select 'Next' to proceed.



littlefishFX



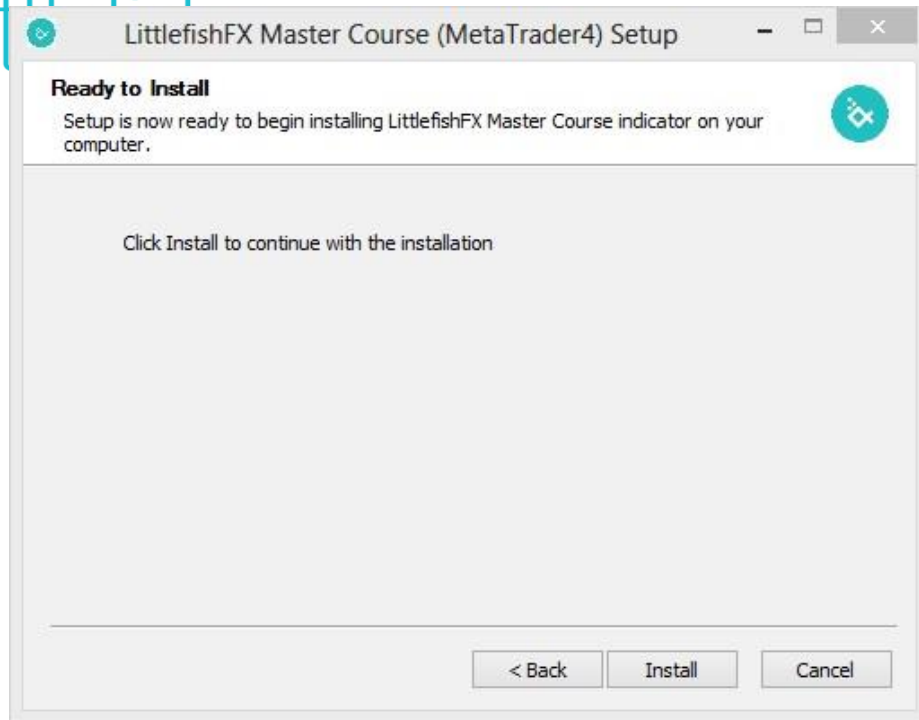
5. A window will then pop up asking you to choose the MT4 Terminal you wish to install the indicators on. Use 'Browse' to select the destination, and then click 'Next' to continue.



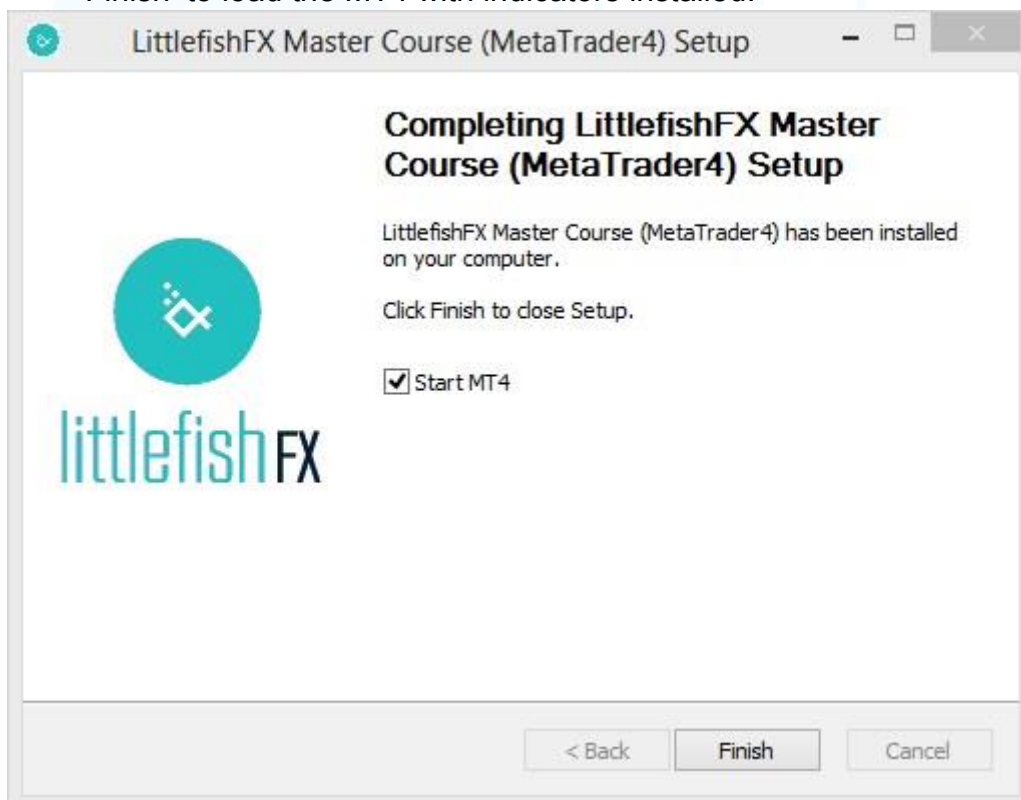
6. A window will open asking you to confirm the installation - proceed by clicking 'Install'.



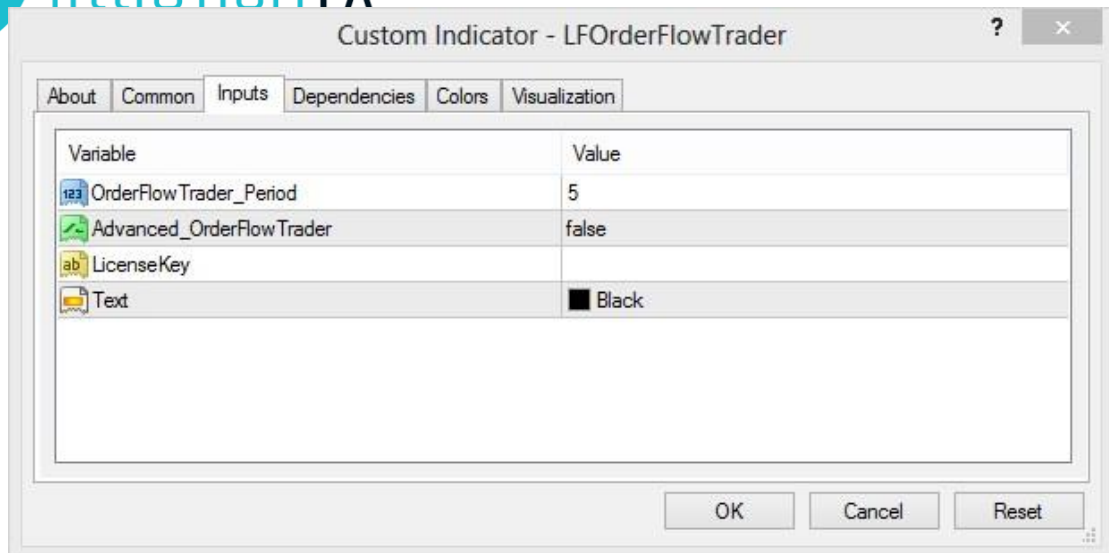
littlefishFX



7. Finally, a window will appear asking you to start MT4. Simply click 'Finish' to load the MT4 with indicators installed.

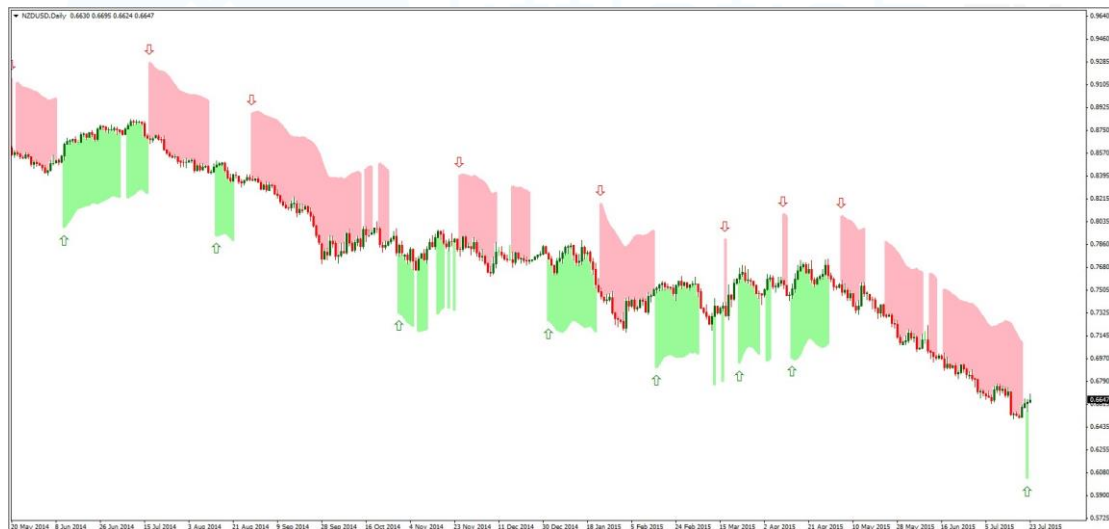


8. Once the MT4 is open, simply go to 'Insert' in the toolbar along the top, then click 'Indicators', then go to 'Custom' and you will see a list with both 'LFOOrder Flow Trader' and 'LFPsych'. Begin by clicking 'LFOOrder Flow Trader'. Once clicked, a window will open like the one below:



If you are using the full version, enter your license key - then click 'Common' and click 'Allow DLL Imports' and click 'Ok'.

The indicator is now successfully installed and will appear on your charts like this:



- Simply repeat step 8 for 'LFPsych'. Remember to enter your license key if you are using the full version and to click 'Common' and select 'Allow DLL Imports'.

Please note: The license key is required for the full version only, and the indicators will run normally during the trial period.